

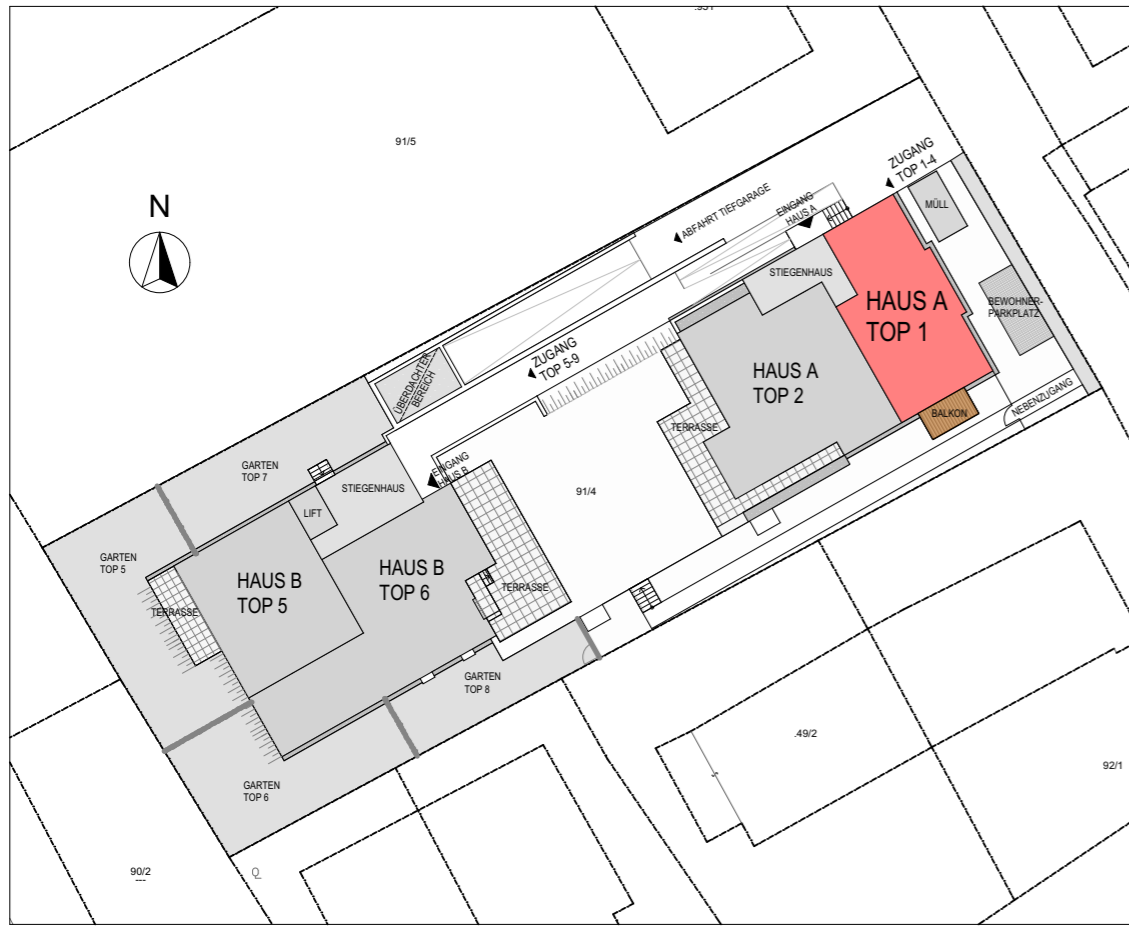
WOHNHAUSANLAGE "STADT VILLA"
4050 TRAUN, TISCHLERSTRASSE 13



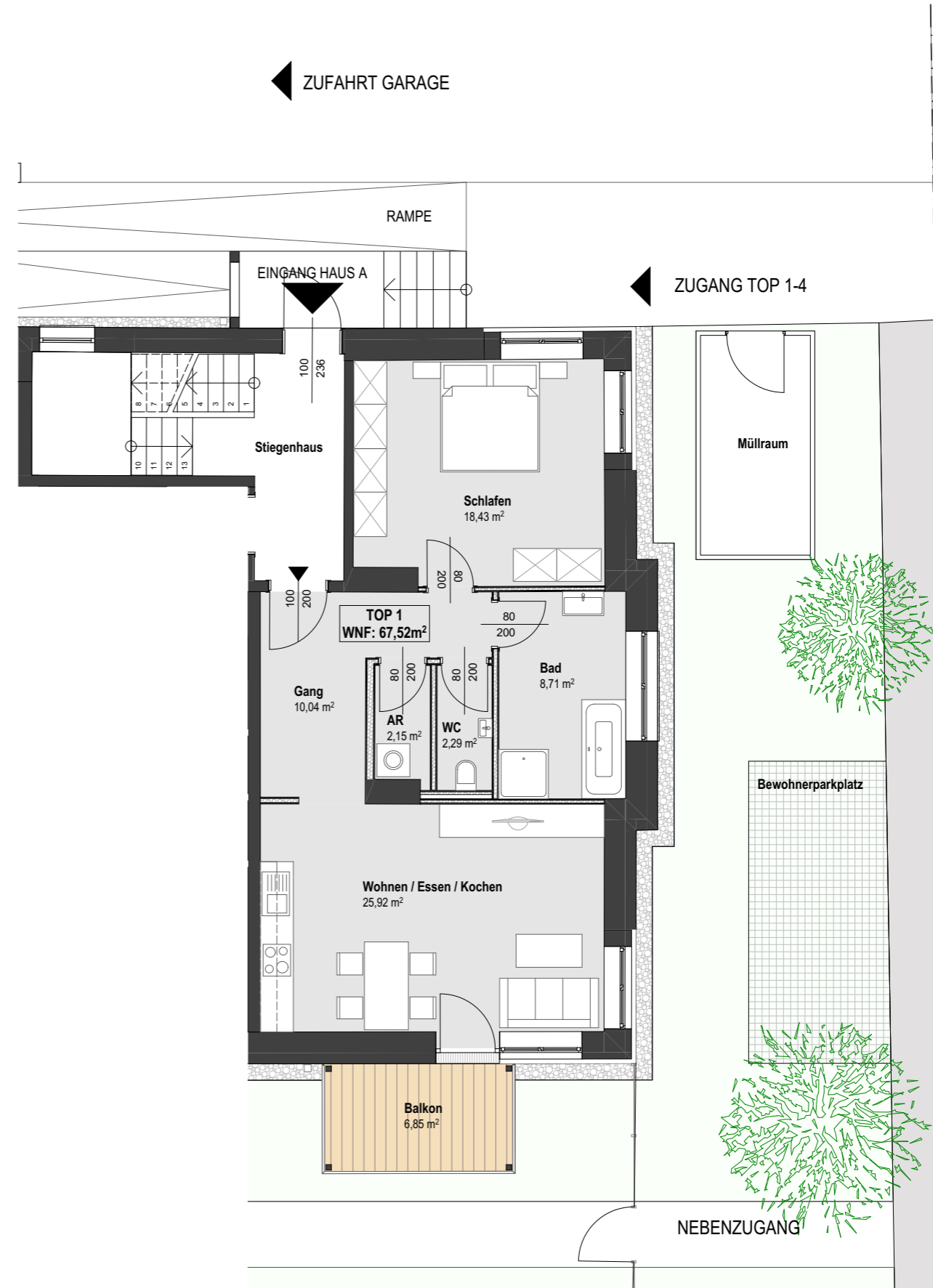






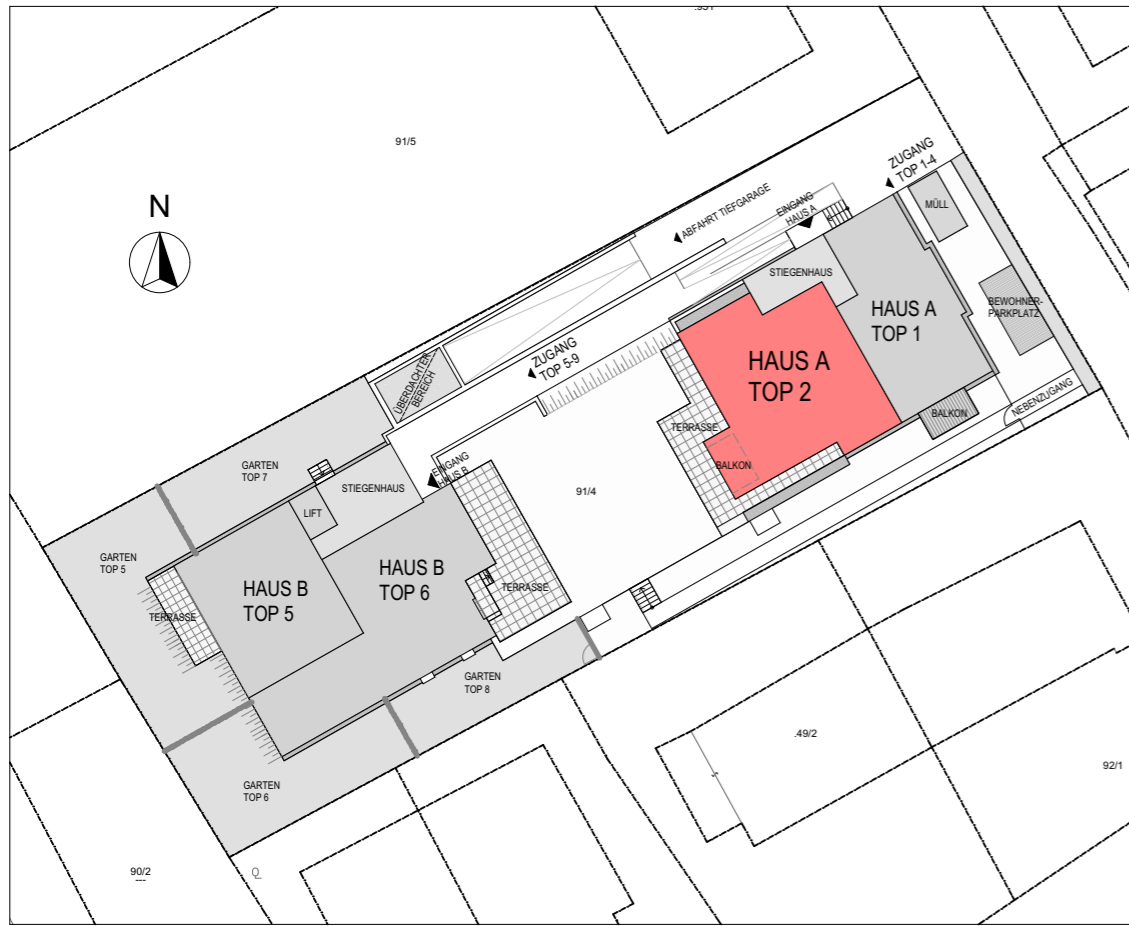


LAGEPLAN M 1:500

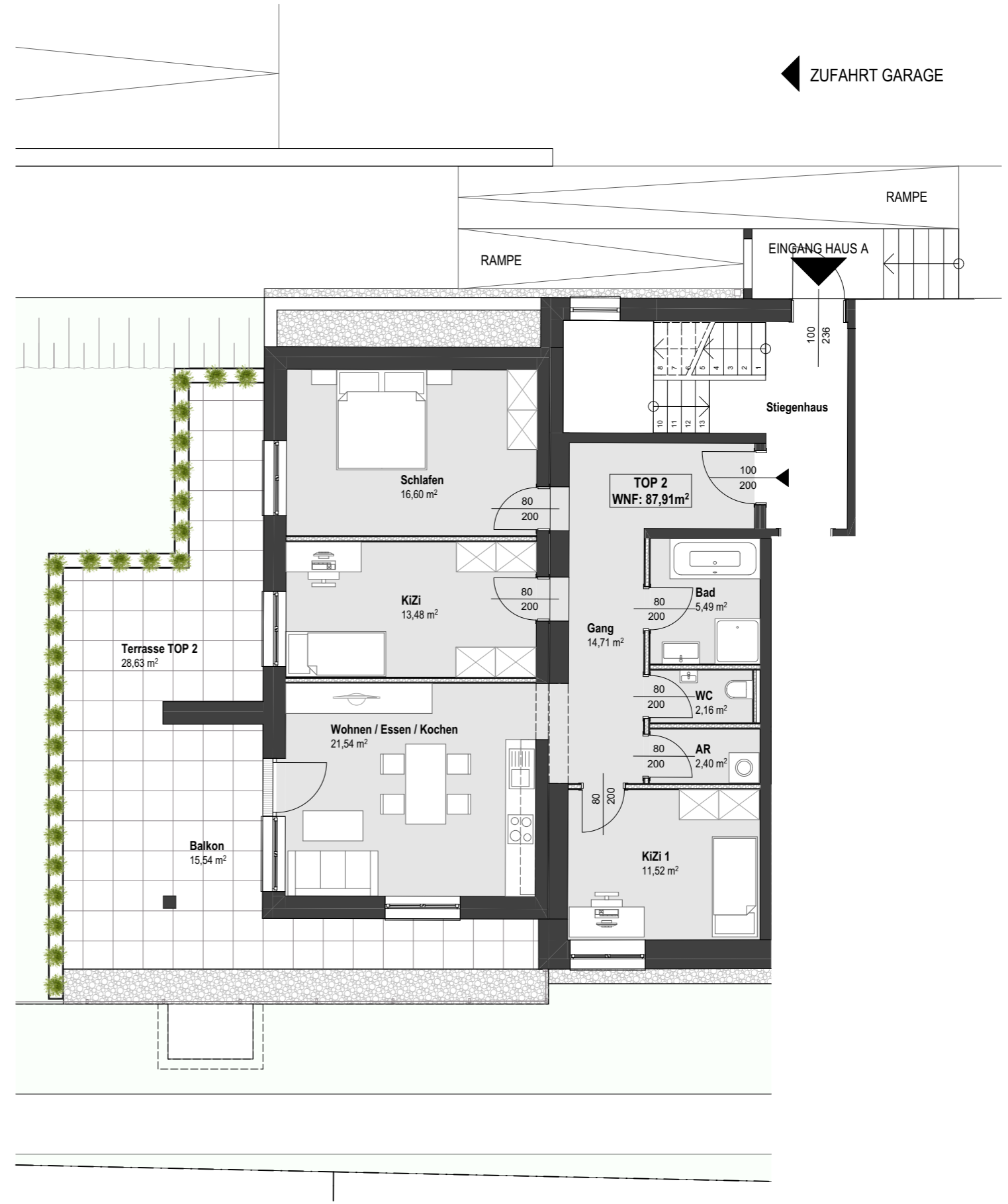


HAUS A - TOP 1 - ERDGESCHOSS

M 1:100

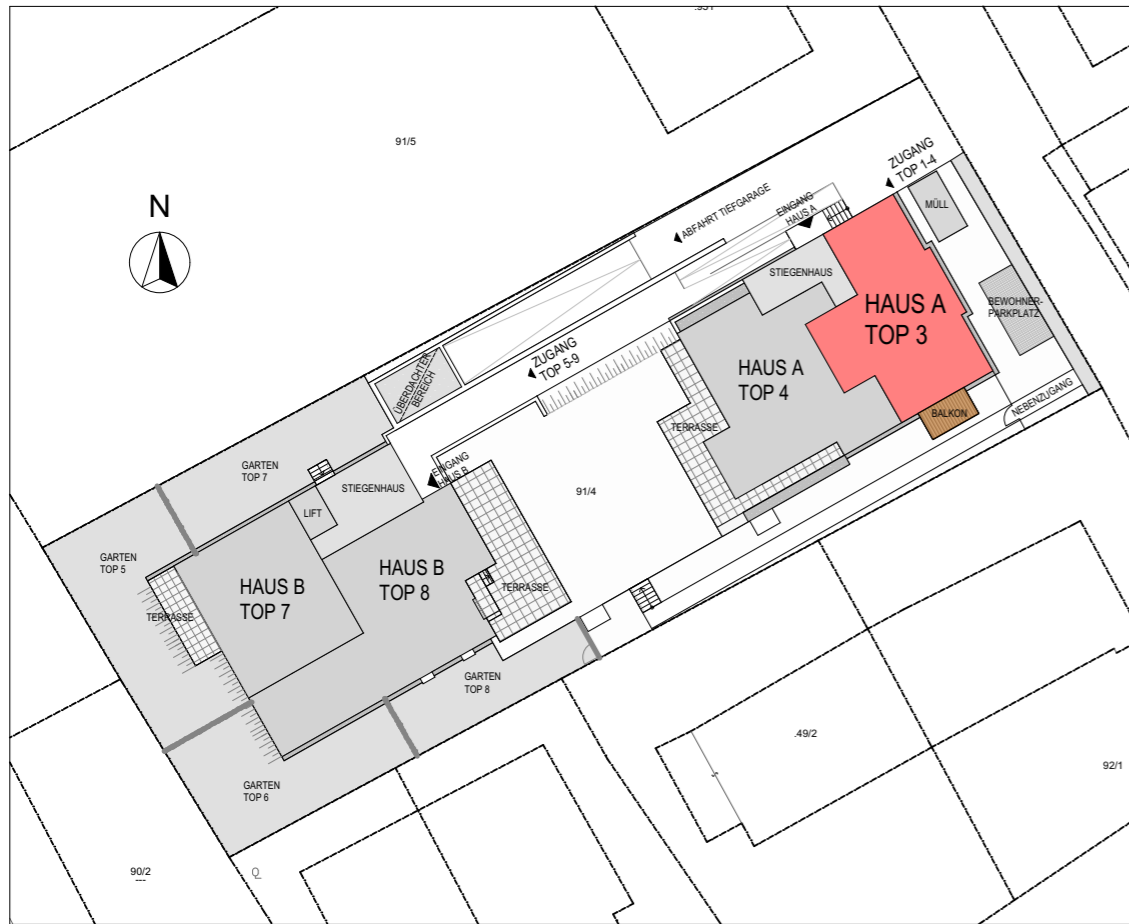


LAGEPLAN M 1:500

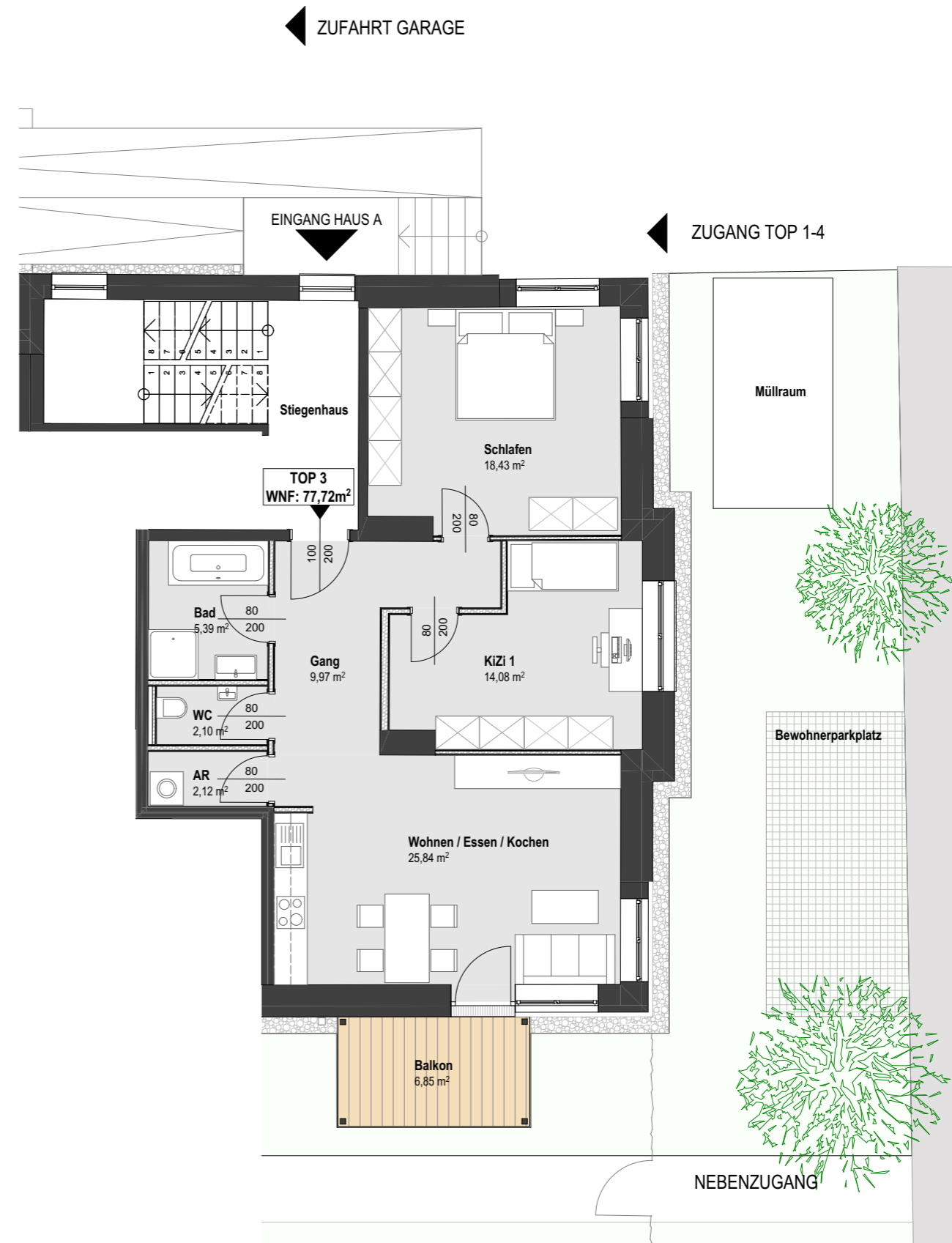


HAUS A - TOP 2 - ERDGESCHOSS

M 1:100

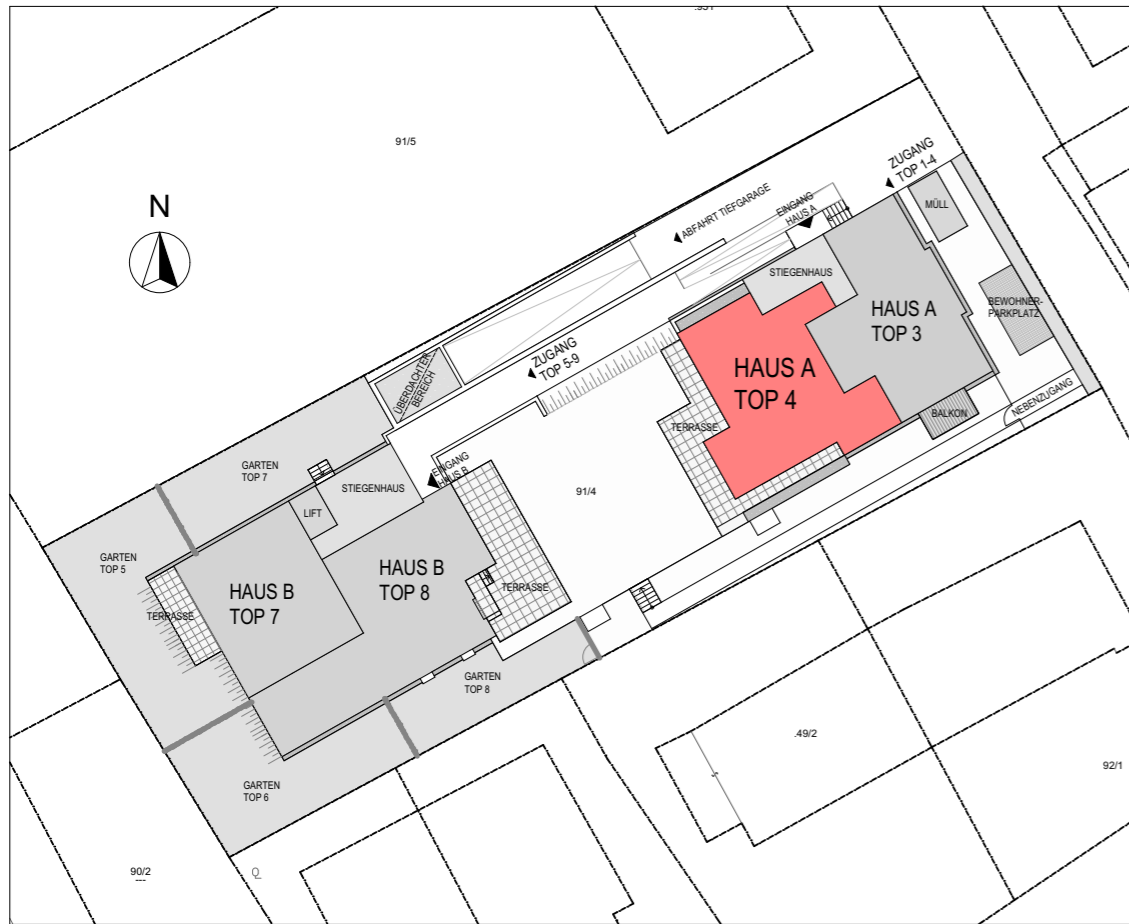


LAGEPLAN M 1:500

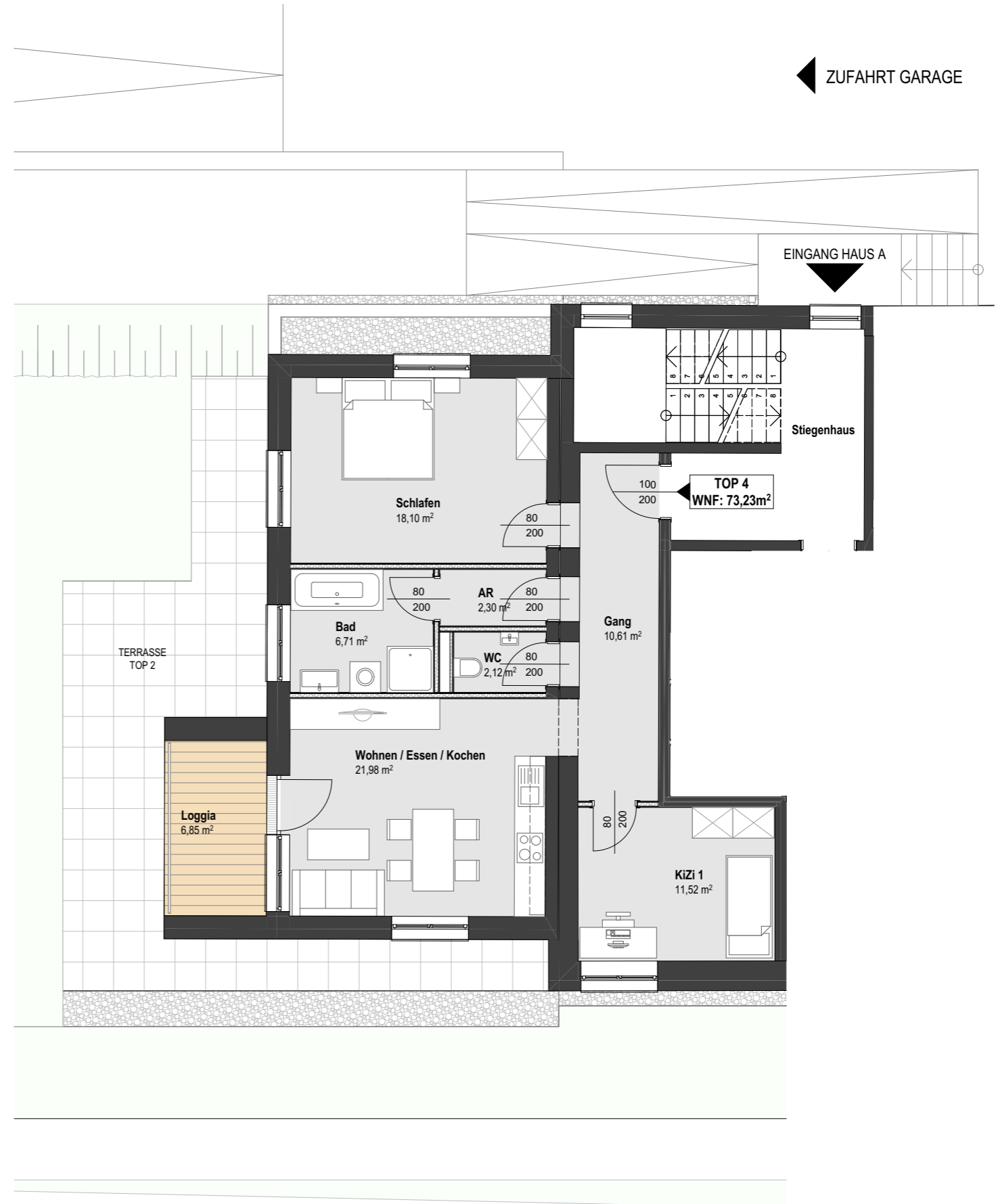


HAUS A - TOP 3 - 1.OBERGESCHOSS

M 1:100



LAGEPLAN M 1:500

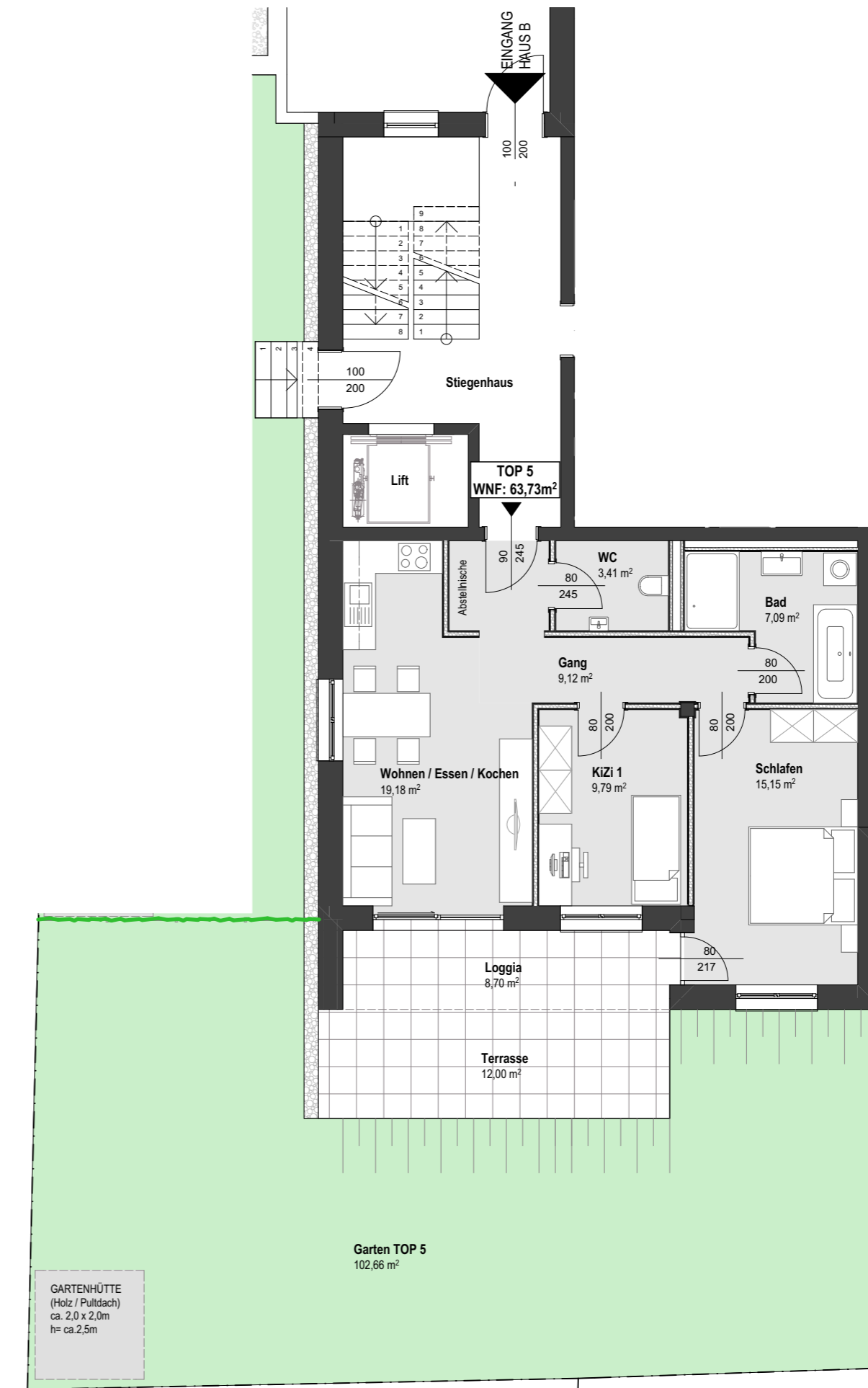


HAUS A - TOP 4 - 1. OBERGESCHOSS

M 1:100



LAGEPLAN M 1:500

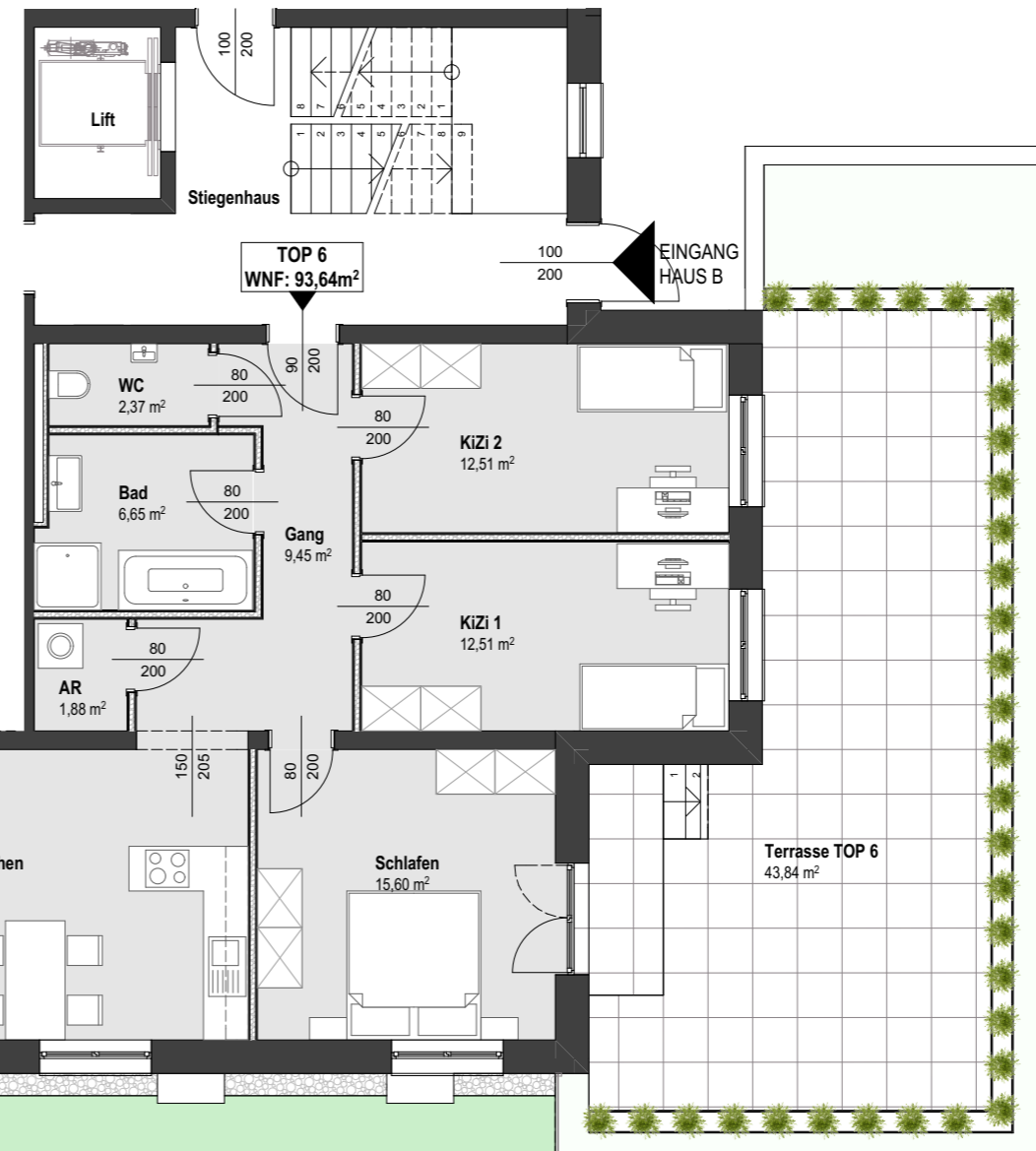


HAUS B - TOP 5 - ERDGESCHOSS

M 1:100



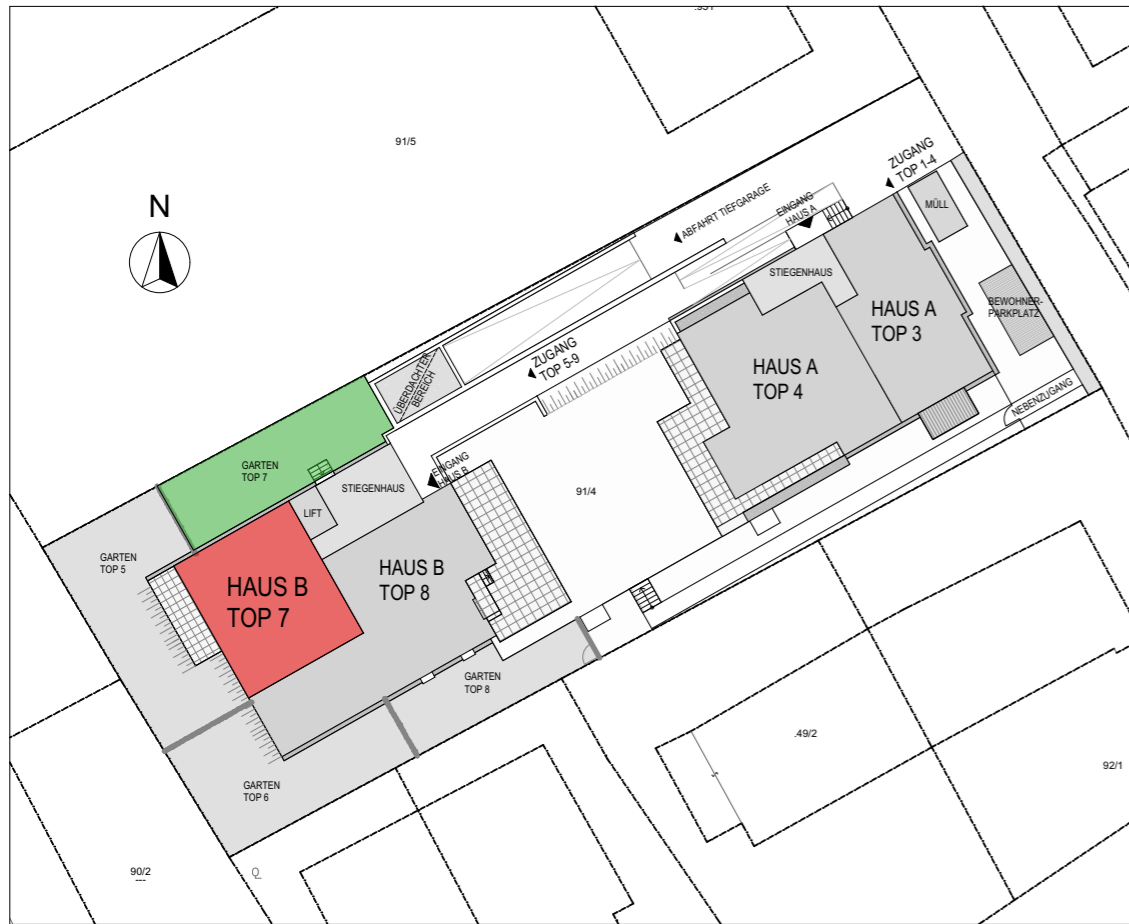
LAGEPLAN M 1:500



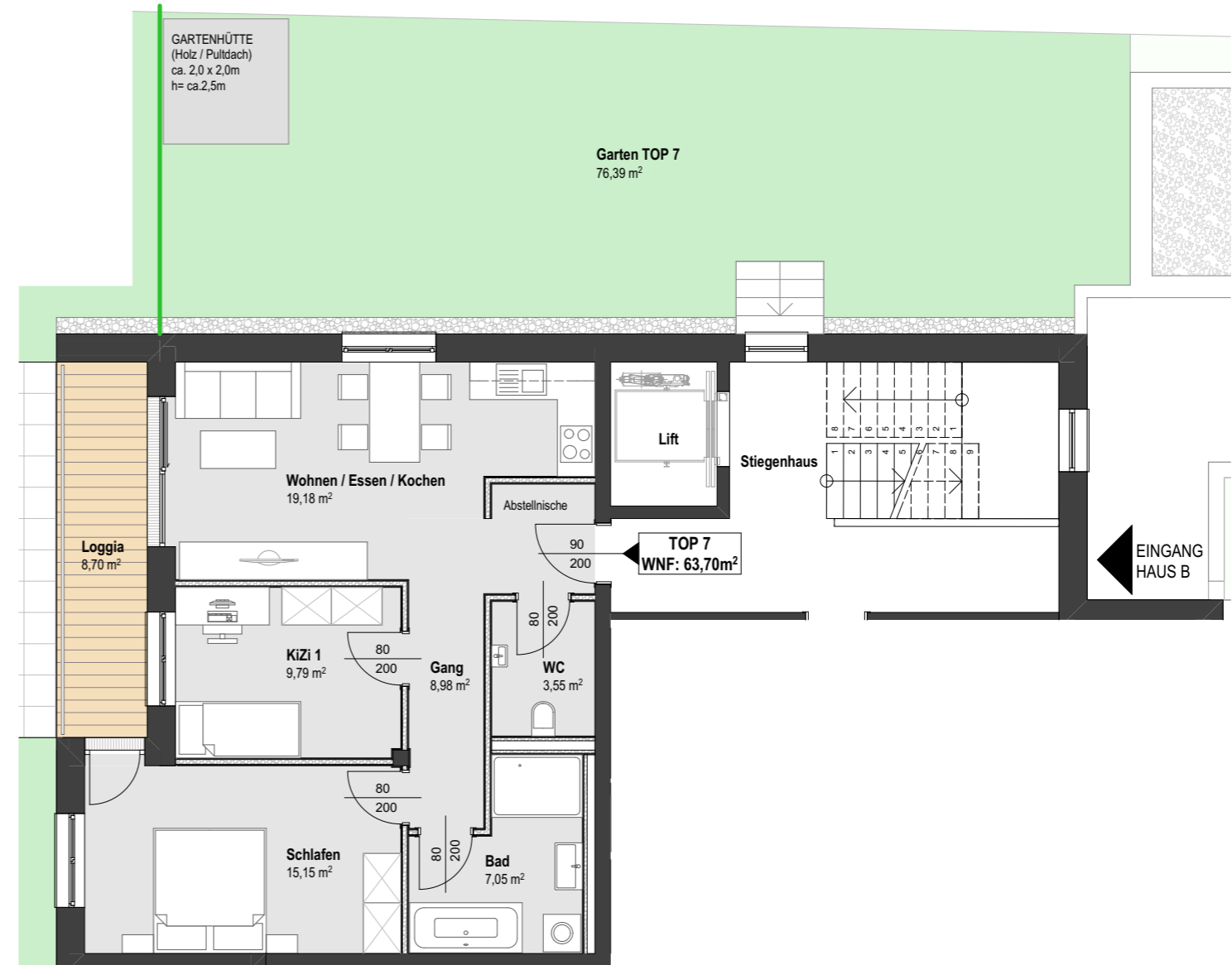
HAUS B - TOP 6 - ERDGESCHOSS

M 1:100

GARTENHÜTTE
(Holz / Pultdach)
ca. 2,0 x 2,0m
h= ca.2,5m



LAGEPLAN M 1:500

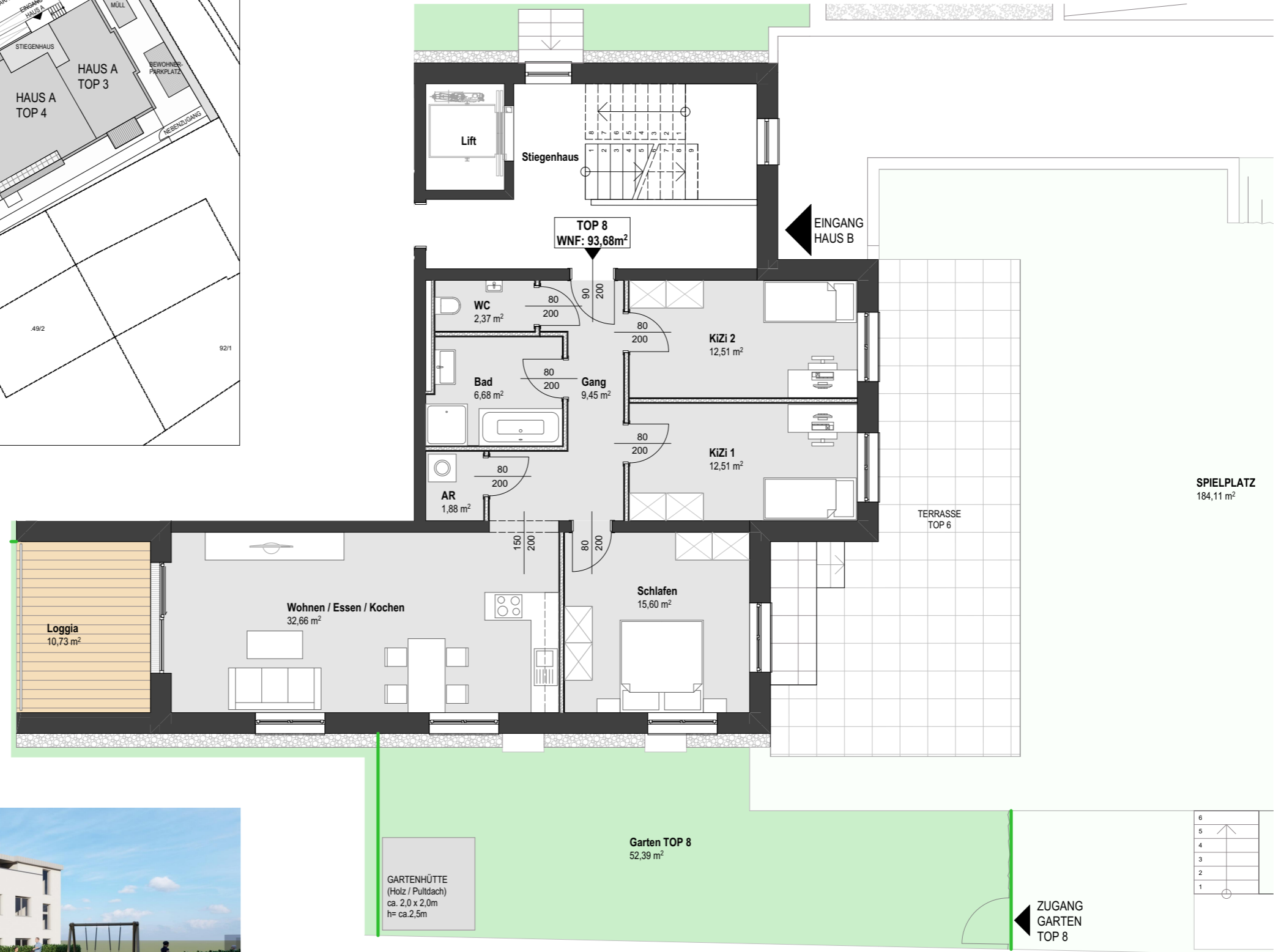


HAUS B - TOP 7 - 1.OBERGESCHOSS

M 1:100

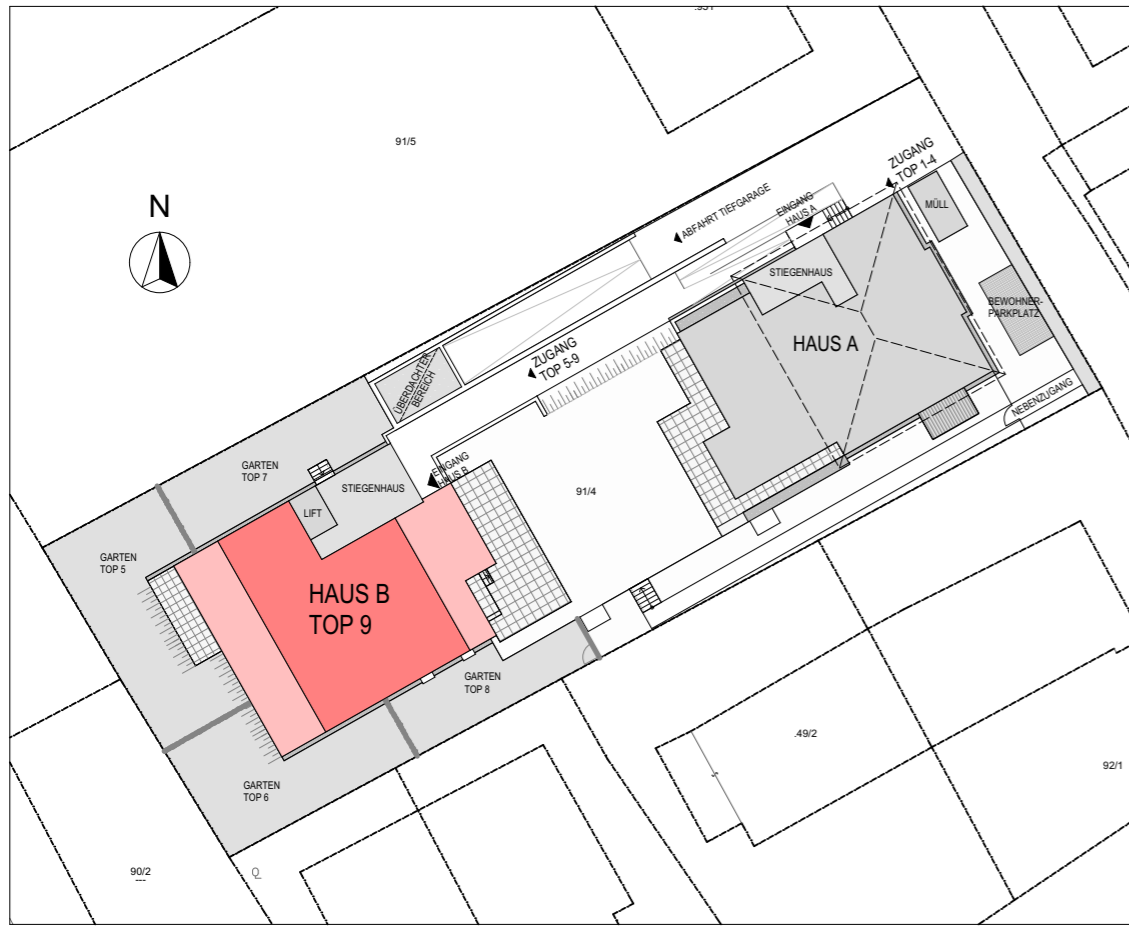


LAGEPLAN M 1:500

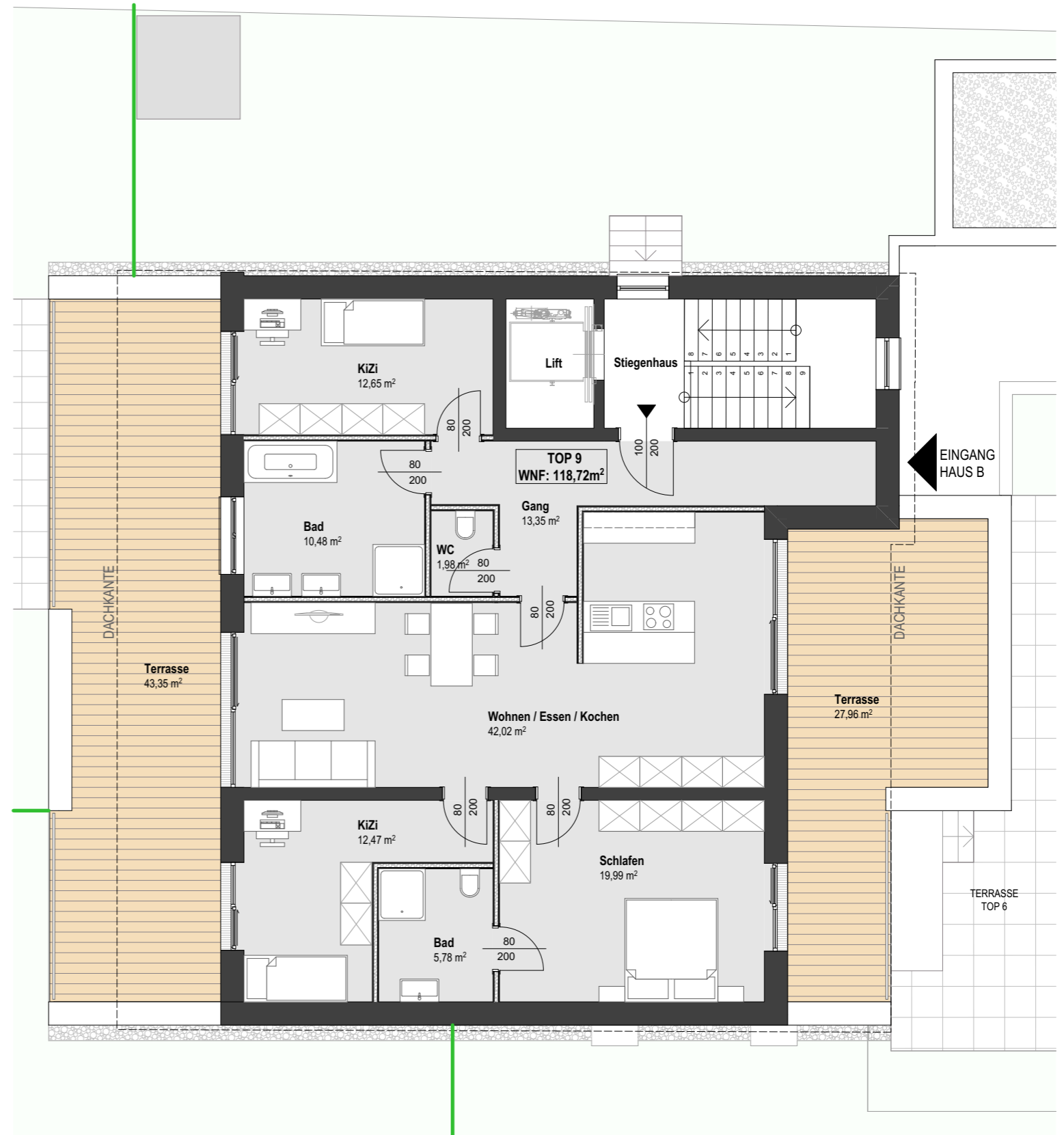


HAUS B - TOP 8 - 1.OBERGESCHOSS

M 1:100



LAGEPLAN M 1:500



HAUS B - TOP 9 - DACHGESCHOSS

M 1:100